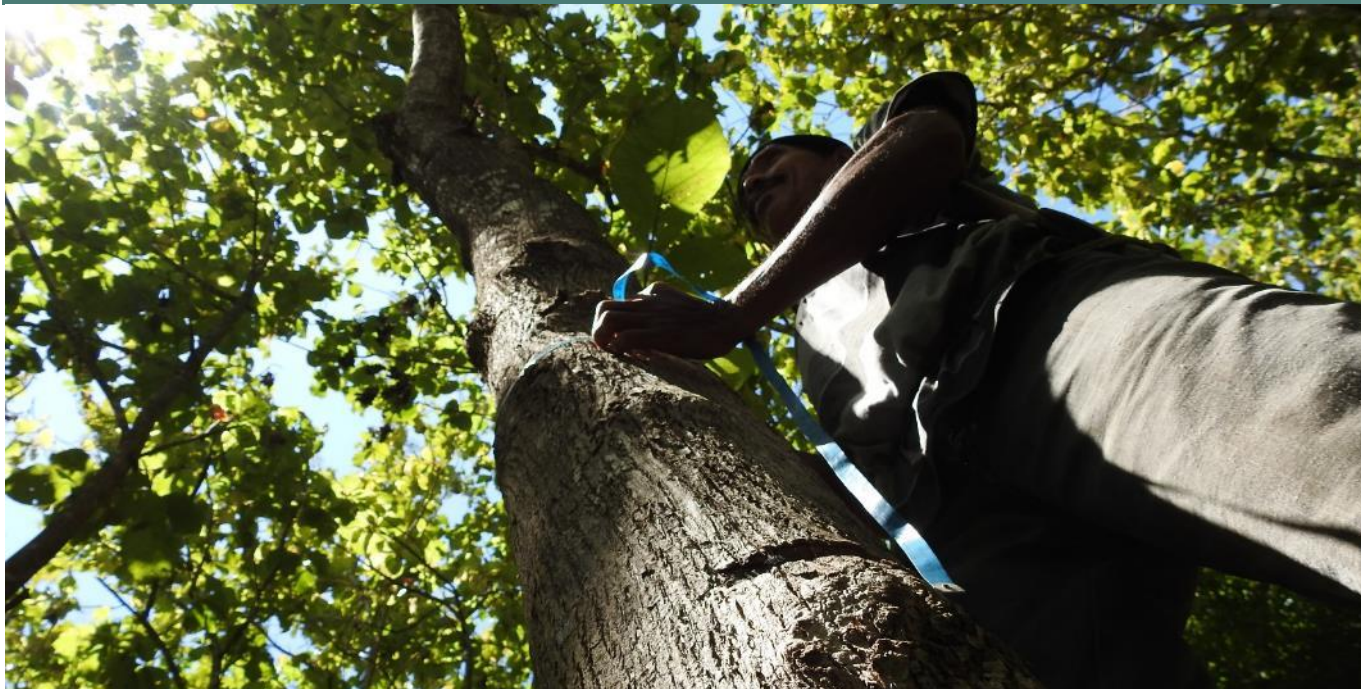


Strengthening non-state actor involvement in forest governance



CAPACITY BUILDING



Training of Trainers on carbon stock measurement was held with stakeholders and included 547 people, 24% women.

INCREASED TRANSPARENCY AND ACCESS TO INFO



The community-based monitoring programme was expanded to include livelihood and environmental services, encompassing 58,000 ha.

SUSTAINABLE AND INFORMED NETWORKS



The West Manggarai TLAS Coordination Team was institutionalized through Governor Decree and identified five Farmer Groups in targeted villages willing to work through the initiative.

INFORMED AND EFFECTIVE PARTICIPATION



Two (2) policy process interventions were produced in coordination with the Ministry of Environment and Forestry and the Ecosystem Restoration Working Group.

During the reporting period, **Burung Indonesia** worked with the Provincial Forestry Agency, Regional Planning and Development Agency, and Forest Management Unit to develop and strengthen small-scale of FLEGT, community-based monitoring and community-based ecotourism implementation in West Manggarai, Flores.

- Environmental Monitoring Services (EMS) (community-based monitoring) will occur twice per year

Facilitation and advocacy of social forestry schemes for tourism management development in Mbeliling landscape was held with the Forest Management Unit (FMU). Results were that:

- An ecotourism master plan site was arranged and consulted with stakeholders (FMU, Ecotourism Agency, Regional Planning Agency/BP4D, LCGs) and commitment toward ecotourism development was secured;
- Puar Lolo became a pilot site for ecotourism development in Mbeliling Landscape; and
- A meeting was held to build commitment among stakeholders

ERC HOLDERS ARE NOW FOCUSING ON THE POTENTIAL OF NON-TIMBER FOREST PRODUCTS, ENVIRONMENTAL SERVICES AND CARBON TRADING

ADDITIONAL ACTIVITIES

- Training of Trainers on carbon stock measurement was held with stakeholders in West Manggarai
- Established a nursery in Kempo village and are in the process of developing 10,000 seedling capacity (teak, mahogany, jabon, durian and other fruits)
- Identified potential of a teak seed garden and garden experiment in Kempo and Poco Golo Kempo villages
- The development of a forestry information system was coordinated with the FMU to improve the existing system
- A teak marketing business plan consultation was held with the management unit of Mbeliling Landscape Cooperative (KSU-BAM).
- The incorporation of teak farmer groups was established and institutionalized in Kempo village
- Facilitated farmer business units to obtain business legality
- Community-based monitoring programmes comprised 94,000 ha in 9 villages (86 people, 36% women)

Community-based Monitoring in Desa Watu Panggal village



The preparation of TLAS implementation in West Manggarai has evolved and is now in the stages of business plan socialization, capacity building, and strengthening of teak farmer groups and local governments institutionalized through the action plan of the TLAS Coordination Team.

- Discussion series with the Ministry of Environment and Forestry to improve policy processes related to ecosystem restoration, REDD+ implementation, and FLEGT
- Assessment of timber marketing administration implementation (P.48/2018) in West Manggarai was conducted with help from the assessor team and will be analyzed
- Data was collected for next stage analyses
- Facilitated the teak farmers to develop a land ownership certificate (SKKT) that was submitted to village governments

UPCOMING EVENTS

- Strengthening position and contribution of ecosystem restoration in REDD+ schemes in Indonesia, with monitoring and evaluation implementing performance
- Facilitating the development of pilot ecotourism site plans and partnership between FMU and the Community
- Collecting data and analyzing on wood marketing administration (P.48/2018) implementation assessment
- Finalize preparations for completing TLAS certification documents
- Capacity building for teak farmer groups on teak wood processing
- Carbon stock assessment in Mbeliling landscape

WWW.BIRDLIFE.ORG/FORESTGOVERNANCE

This project is funded by the European Union



This project is led by

